

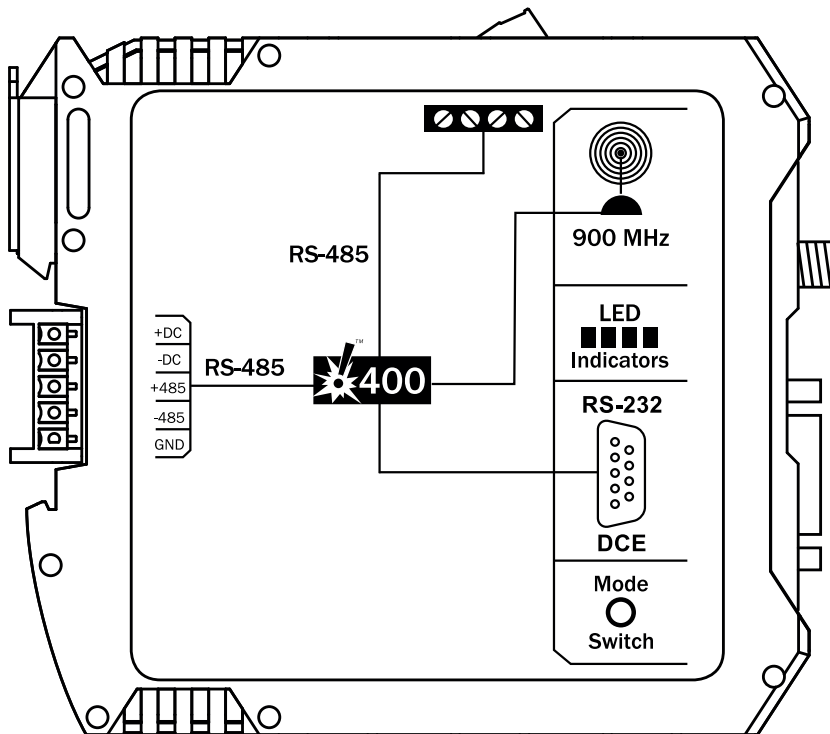
## 900 MHz spread spectrum radio

The Click 400 is a 900 MHz spread spectrum radio with two RS-485 ports and one RS-232 port which are active at all times. The Click 400 auto-detects the serial settings of a SmartSensor network for quick and easy installation.



- Converts serial to 900 MHz and vice versa
- Mounts on a DIN rail for quick and easy installation
- Autobauds to serial port devices
- Includes multiple communication ports for RS-232, RS-485, and 900 MHz radio communication
- Uses either 900 MHz or serial interfaces to configure the device
- Conformal coated
- Direct cable replacement with a distance of over 20 miles (line of sight)

**TOP**



**FRONT**

