

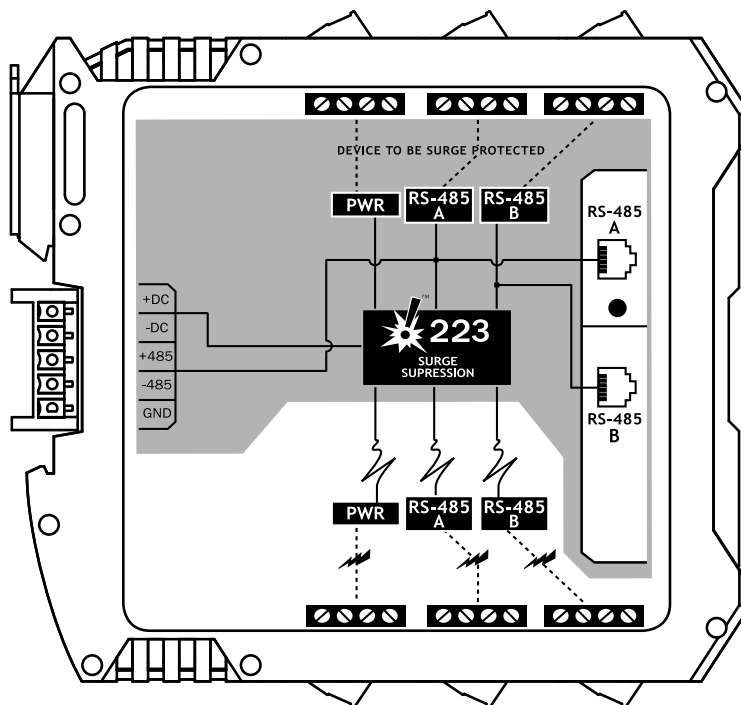
Dual-485 surge protector

The Click 223 provides surge protection for one DC power line and two RS-485 lines. Use this device with your installation to protect your equipment from surges coming in on cables, such as those caused by lightning striking near underground cable runs.



- Multi-stage surge protection for RS-485 and DC power
- Low capacitance RS-485 protection
- Protects traffic monitoring devices and traffic cabinets
- Designed for use with all Click devices
- DIN rail-mounted for easy installation
- Convenient, hot-swappable power and communication buses
- Pluggable screw terminals minimize problems caused by incorrect wiring
- Has two independent RS-485 buses
- LED indicates power and surge protection status
- Conformal coated
- Complies with NEMA TS2-2003 environmental testing
- Complies with IEC/EN 61000-4-5 level 4

TOP



FRONT

